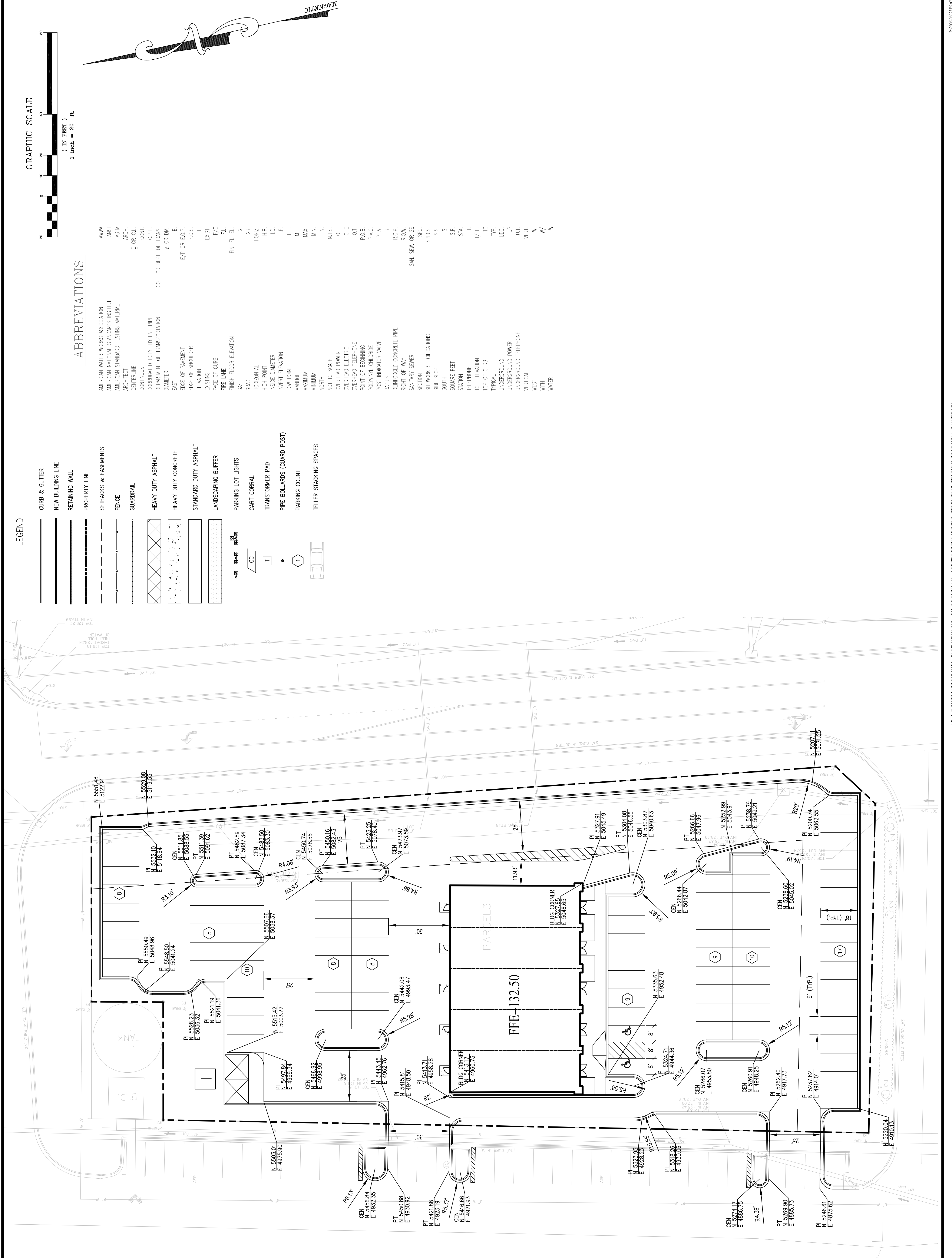


sain associates
 Sain Associates, Inc./Consulting Engineers/Surveyors
 Suite 200, 244 West Valley Avenue • Birmingham, Alabama 35209
 Phone: (205) 940-6420, FAX: (205) 940-6433

LAYOUT PLAN
 RAMA SHOPS
 GREENWOOD, MISSISSIPPI
 FOR
 RAMA INVESTMENTS, INC.
 ALPHARETTA, GEORGIA
 CWS NO. C7-R0
 SCALE 1" = 20'
 DATE 8-2-06
 JOB NO. 06-0233

NO.	DESCRIPTION	BY	CHKD	DATE

TITLE



LEGEND

- CURB & GUTTER
- NEW BUILDING LINE
- RETAINING WALL
- PROPERTY LINE
- SETBACKS & EASEMENTS
- FENCE
- GUARDRAIL
- HEAVY DUTY ASPHALT
- HEAVY DUTY CONCRETE
- STANDARD DUTY ASPHALT
- LANDSCAPING BUFFER
- PARKING LOT LIGHTS
- CART CORRAL
- TRANSFORMER PAD
- PIPE BOLLARDS (GUARD POST)
- PARKING COUNT
- TELLER STACKING SPACES

ABBREVIATIONS

AMERICAN WATER WORKS ASSOCIATION
 AMERICAN NATIONAL STANDARDS INSTITUTE
 AMERICAN STANDARD TESTING MATERIAL
 ARCHITECT
 CONTINUOUS
 CORRUGATED POLYETHYLENE PIPE
 DEPARTMENT OF TRANSPORTATION
 DIAMETER
 EAST
 EDGE OF PAVEMENT
 EDGE OF SHOULDER
 ELEVATION
 EXISTING
 FACE OF CURB
 FIRE LANE
 FINISH FLOOR ELEVATION
 GAS
 GRADE
 HORIZONTAL
 INSIDE DIAMETER
 INVERT ELEVATION
 LOW POINT
 MAHOLE
 MAXIMUM
 MINIMUM
 NORTH
 NOT TO SCALE
 OVERHEAD POWER
 OVERHEAD ELECTRIC
 OVERHEAD TELEPHONE
 POINT OF BEGINNING
 POLYVINYL CHLORIDE
 POST INDICATOR VALVE
 RADIUS
 REINFORCED CONCRETE PIPE
 RIGHT-OF-WAY
 ROW
 SAN. SEW. OR SS
 SECTION
 SIDE SLOPE
 SOUTH
 SQUARE FEET
 STATION
 TELEPHONE
 TOP ELEVATION
 TOP OF CURB
 TYPICAL
 UNDERGROUND
 UNDERGROUND POWER
 UNDERGROUND TELEPHONE
 VERTICAL
 WEST
 WITH
 WATER

ABBREVIATIONS

ANMA
 ANSI
 ASTM
 ARCH.
 E OR C.L.
 CONT.
 C.P.P.
 D.O.T. OR DEPT. OF TRANS.
 Ø OR DIA.
 E
 E/P OR E.O.P.
 E.O.S.
 E.L.
 E.S.
 EXIST.
 F/C
 F.L.
 F.M. FL. EL.
 G.
 GR.
 HORIZ.
 H.P.
 I.D.
 I.E.
 L.P.
 L.P.
 M.H.
 MAX.
 MIN.
 N
 N.T.S.
 O.P.
 O.E.
 O.H.E.
 O.T.
 P.O.B.
 P.V.C.
 P.I.V.
 R.
 R.C.P.
 R.O.W.
 SAN. SEW. OR SS
 SEC.
 SECS.
 S.S.
 S.
 S.F.
 STA.
 T.
 T/EL.
 T.C.
 TYP.
 UDG.
 UP
 U.T.
 U.T.
 VERT.
 W.
 W/
 W

ABBREVIATIONS

AMERICAN WATER WORKS ASSOCIATION
 AMERICAN NATIONAL STANDARDS INSTITUTE
 AMERICAN STANDARD TESTING MATERIAL
 ARCHITECT
 CONTINUOUS
 CORRUGATED POLYETHYLENE PIPE
 DEPARTMENT OF TRANSPORTATION
 DIAMETER
 EAST
 EDGE OF PAVEMENT
 EDGE OF SHOULDER
 ELEVATION
 EXISTING
 FACE OF CURB
 FIRE LANE
 FINISH FLOOR ELEVATION
 GAS
 GRADE
 HORIZONTAL
 INSIDE DIAMETER
 INVERT ELEVATION
 LOW POINT
 MAHOLE
 MAXIMUM
 MINIMUM
 NORTH
 NOT TO SCALE
 OVERHEAD POWER
 OVERHEAD ELECTRIC
 OVERHEAD TELEPHONE
 POINT OF BEGINNING
 POLYVINYL CHLORIDE
 POST INDICATOR VALVE
 RADIUS
 REINFORCED CONCRETE PIPE
 RIGHT-OF-WAY
 ROW
 SAN. SEW. OR SS
 SECTION
 SIDE SLOPE
 SOUTH
 SQUARE FEET
 STATION
 TELEPHONE
 TOP ELEVATION
 TOP OF CURB
 TYPICAL
 UNDERGROUND
 UNDERGROUND POWER
 UNDERGROUND TELEPHONE
 VERTICAL
 WEST
 WITH
 WATER

ABBREVIATIONS

AMERICAN WATER WORKS ASSOCIATION
 AMERICAN NATIONAL STANDARDS INSTITUTE
 AMERICAN STANDARD TESTING MATERIAL
 ARCHITECT
 CONTINUOUS
 CORRUGATED POLYETHYLENE PIPE
 DEPARTMENT OF TRANSPORTATION
 DIAMETER
 EAST
 EDGE OF PAVEMENT
 EDGE OF SHOULDER
 ELEVATION
 EXISTING
 FACE OF CURB
 FIRE LANE
 FINISH FLOOR ELEVATION
 GAS
 GRADE
 HORIZONTAL
 INSIDE DIAMETER
 INVERT ELEVATION
 LOW POINT
 MAHOLE
 MAXIMUM
 MINIMUM
 NORTH
 NOT TO SCALE
 OVERHEAD POWER
 OVERHEAD ELECTRIC
 OVERHEAD TELEPHONE
 POINT OF BEGINNING
 POLYVINYL CHLORIDE
 POST INDICATOR VALVE
 RADIUS
 REINFORCED CONCRETE PIPE
 RIGHT-OF-WAY
 ROW
 SAN. SEW. OR SS
 SECTION
 SIDE SLOPE
 SOUTH
 SQUARE FEET
 STATION
 TELEPHONE
 TOP ELEVATION
 TOP OF CURB
 TYPICAL
 UNDERGROUND
 UNDERGROUND POWER
 UNDERGROUND TELEPHONE
 VERTICAL
 WEST
 WITH
 WATER

ABBREVIATIONS

AMERICAN WATER WORKS ASSOCIATION
 AMERICAN NATIONAL STANDARDS INSTITUTE
 AMERICAN STANDARD TESTING MATERIAL
 ARCHITECT
 CONTINUOUS
 CORRUGATED POLYETHYLENE PIPE
 DEPARTMENT OF TRANSPORTATION
 DIAMETER
 EAST
 EDGE OF PAVEMENT
 EDGE OF SHOULDER
 ELEVATION
 EXISTING
 FACE OF CURB
 FIRE LANE
 FINISH FLOOR ELEVATION
 GAS
 GRADE
 HORIZONTAL
 INSIDE DIAMETER
 INVERT ELEVATION
 LOW POINT
 MAHOLE
 MAXIMUM
 MINIMUM
 NORTH
 NOT TO SCALE
 OVERHEAD POWER
 OVERHEAD ELECTRIC
 OVERHEAD TELEPHONE
 POINT OF BEGINNING
 POLYVINYL CHLORIDE
 POST INDICATOR VALVE
 RADIUS
 REINFORCED CONCRETE PIPE
 RIGHT-OF-WAY
 ROW
 SAN. SEW. OR SS
 SECTION
 SIDE SLOPE
 SOUTH
 SQUARE FEET
 STATION
 TELEPHONE
 TOP ELEVATION
 TOP OF CURB
 TYPICAL
 UNDERGROUND
 UNDERGROUND POWER
 UNDERGROUND TELEPHONE
 VERTICAL
 WEST
 WITH
 WATER

ABBREVIATIONS

AMERICAN WATER WORKS ASSOCIATION
 AMERICAN NATIONAL STANDARDS INSTITUTE
 AMERICAN STANDARD TESTING MATERIAL
 ARCHITECT
 CONTINUOUS
 CORRUGATED POLYETHYLENE PIPE
 DEPARTMENT OF TRANSPORTATION
 DIAMETER
 EAST
 EDGE OF PAVEMENT
 EDGE OF SHOULDER
 ELEVATION
 EXISTING
 FACE OF CURB
 FIRE LANE
 FINISH FLOOR ELEVATION
 GAS
 GRADE
 HORIZONTAL
 INSIDE DIAMETER
 INVERT ELEVATION
 LOW POINT
 MAHOLE
 MAXIMUM
 MINIMUM
 NORTH
 NOT TO SCALE
 OVERHEAD POWER
 OVERHEAD ELECTRIC
 OVERHEAD TELEPHONE
 POINT OF BEGINNING
 POLYVINYL CHLORIDE
 POST INDICATOR VALVE
 RADIUS
 REINFORCED CONCRETE PIPE
 RIGHT-OF-WAY
 ROW
 SAN. SEW. OR SS
 SECTION
 SIDE SLOPE
 SOUTH
 SQUARE FEET
 STATION
 TELEPHONE
 TOP ELEVATION
 TOP OF CURB
 TYPICAL
 UNDERGROUND
 UNDERGROUND POWER
 UNDERGROUND TELEPHONE
 VERTICAL
 WEST
 WITH
 WATER

ABBREVIATIONS

AMERICAN WATER WORKS ASSOCIATION
 AMERICAN NATIONAL STANDARDS INSTITUTE
 AMERICAN STANDARD TESTING MATERIAL
 ARCHITECT
 CONTINUOUS
 CORRUGATED POLYETHYLENE PIPE
 DEPARTMENT OF TRANSPORTATION
 DIAMETER
 EAST
 EDGE OF PAVEMENT
 EDGE OF SHOULDER
 ELEVATION
 EXISTING
 FACE OF CURB
 FIRE LANE
 FINISH FLOOR ELEVATION
 GAS
 GRADE
 HORIZONTAL
 INSIDE DIAMETER
 INVERT ELEVATION
 LOW POINT
 MAHOLE
 MAXIMUM
 MINIMUM
 NORTH
 NOT TO SCALE
 OVERHEAD POWER
 OVERHEAD ELECTRIC
 OVERHEAD TELEPHONE
 POINT OF BEGINNING
 POLYVINYL CHLORIDE
 POST INDICATOR VALVE
 RADIUS
 REINFORCED CONCRETE PIPE
 RIGHT-OF-WAY
 ROW
 SAN. SEW. OR SS
 SECTION
 SIDE SLOPE
 SOUTH
 SQUARE FEET
 STATION
 TELEPHONE
 TOP ELEVATION
 TOP OF CURB
 TYPICAL
 UNDERGROUND
 UNDERGROUND POWER
 UNDERGROUND TELEPHONE
 VERTICAL
 WEST
 WITH
 WATER

ABBREVIATIONS

AMERICAN WATER WORKS ASSOCIATION
 AMERICAN NATIONAL STANDARDS INSTITUTE
 AMERICAN STANDARD TESTING MATERIAL
 ARCHITECT
 CONTINUOUS
 CORRUGATED POLYETHYLENE PIPE
 DEPARTMENT OF TRANSPORTATION
 DIAMETER
 EAST
 EDGE OF PAVEMENT
 EDGE OF SHOULDER
 ELEVATION
 EXISTING
 FACE OF CURB
 FIRE LANE
 FINISH FLOOR ELEVATION
 GAS
 GRADE
 HORIZONTAL
 INSIDE DIAMETER
 INVERT ELEVATION
 LOW POINT
 MAHOLE
 MAXIMUM
 MINIMUM
 NORTH
 NOT TO SCALE
 OVERHEAD POWER
 OVERHEAD ELECTRIC
 OVERHEAD TELEPHONE
 POINT OF BEGINNING
 POLYVINYL CHLORIDE
 POST INDICATOR VALVE
 RADIUS
 REINFORCED CONCRETE PIPE
 RIGHT-OF-WAY
 ROW
 SAN. SEW. OR SS
 SECTION
 SIDE SLOPE
 SOUTH
 SQUARE FEET
 STATION
 TELEPHONE
 TOP ELEVATION
 TOP OF CURB
 TYPICAL
 UNDERGROUND
 UNDERGROUND POWER
 UNDERGROUND TELEPHONE
 VERTICAL
 WEST
 WITH
 WATER