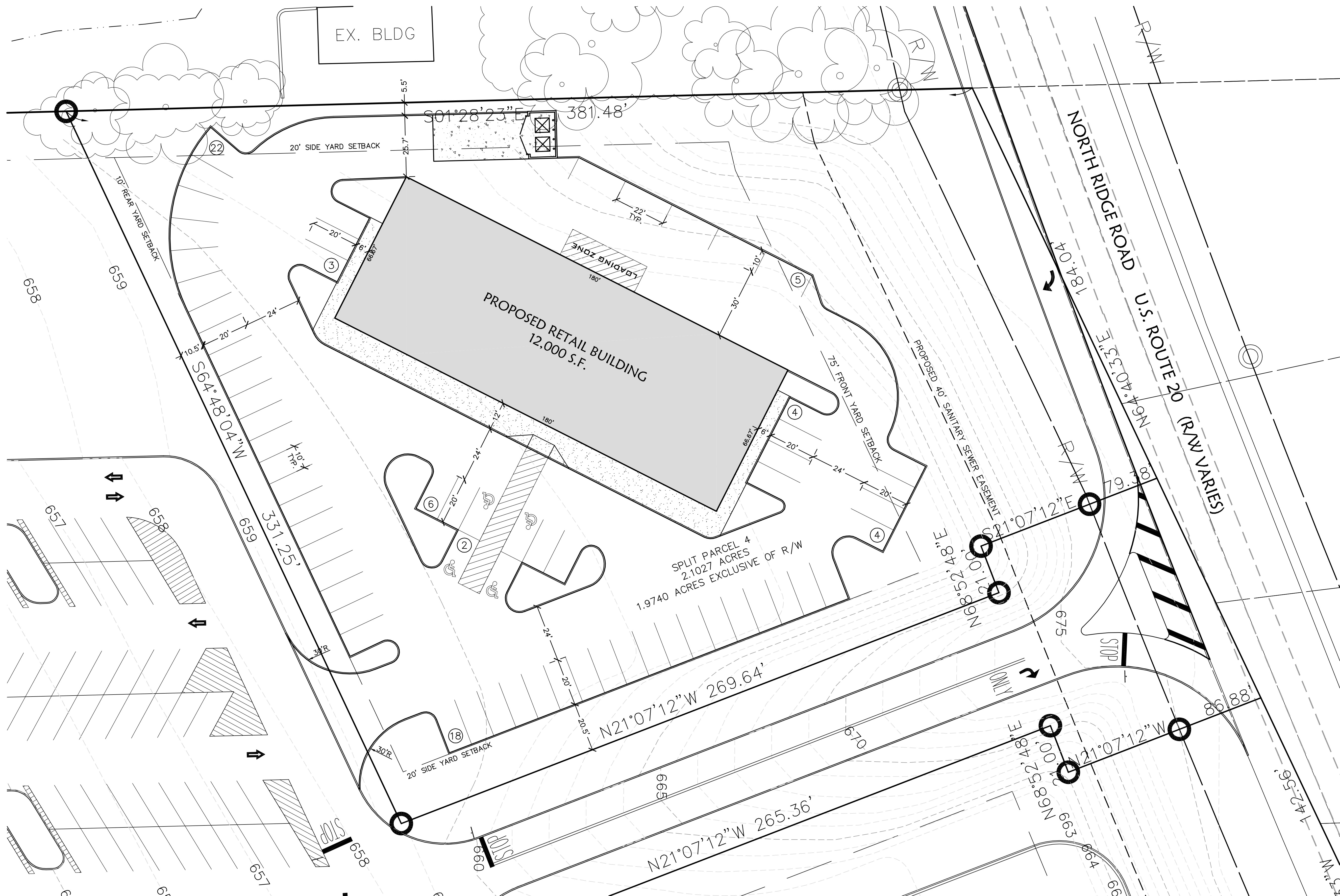
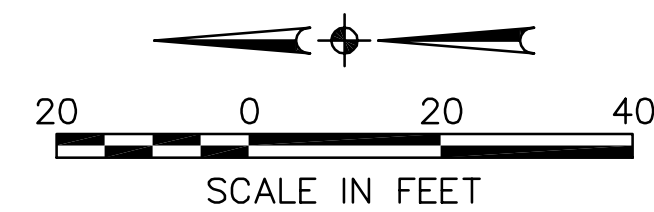


R:\07000\07176\lddt\CONTROL.dwg\CONCEPT02-07176.dwg 11/16/2007 4:01:43 PM EST



SITE DATA:

| | |
|------------------|--|
| AREA | = 1.9740 AC. (TO R/W) |
| ZONING | = B-2 HIGHWAY BUSINESS DISTRICT |
| BUILDING | = 12,000 S.F. RETAIL |
| PARKING REQUIRED | = 5 SPACES/1000 SF = 60 SPACES (INC. 3 HC) |
| PARKING PROVIDED | = 64 SPACES (INC. 4 HC) |
| GREEN SPACE | = 36% (10% MIN. REQUIRED) |



| | | | |
|---|-------------------------|--------------------|--|
| CONCEPTUAL PLAN 2 | MADISON WAL-MART | OUTPARCEL 4 | KS ASSOCIATES |
| TOWNSHIP OF MADISON COUNTY OF LAKE STATE OF OHIO | | | KS Associates, Inc. 260 Burns Road, Suite 100 Elyria, OH 44035 P 440 365 4730 F 440 365 4790 www.ksassociates.com |
| | | | |
| SHEET 1 | | OF 1 | |
| JOB NO. 07176 | | DATE: 11-18-07 | |
| DRAWN BY: T.W. | | DATE: 11-16-07 | |
| CHKD BY: RRB | | DESCRIPTION | |
| DWG. NAME: CONCEPT02-07176 | | DATE | |
| PATH: \DDT\CONTROL.dwg | | REVISIONS | |
| F.B. | | BY | |
| | | RRB | |