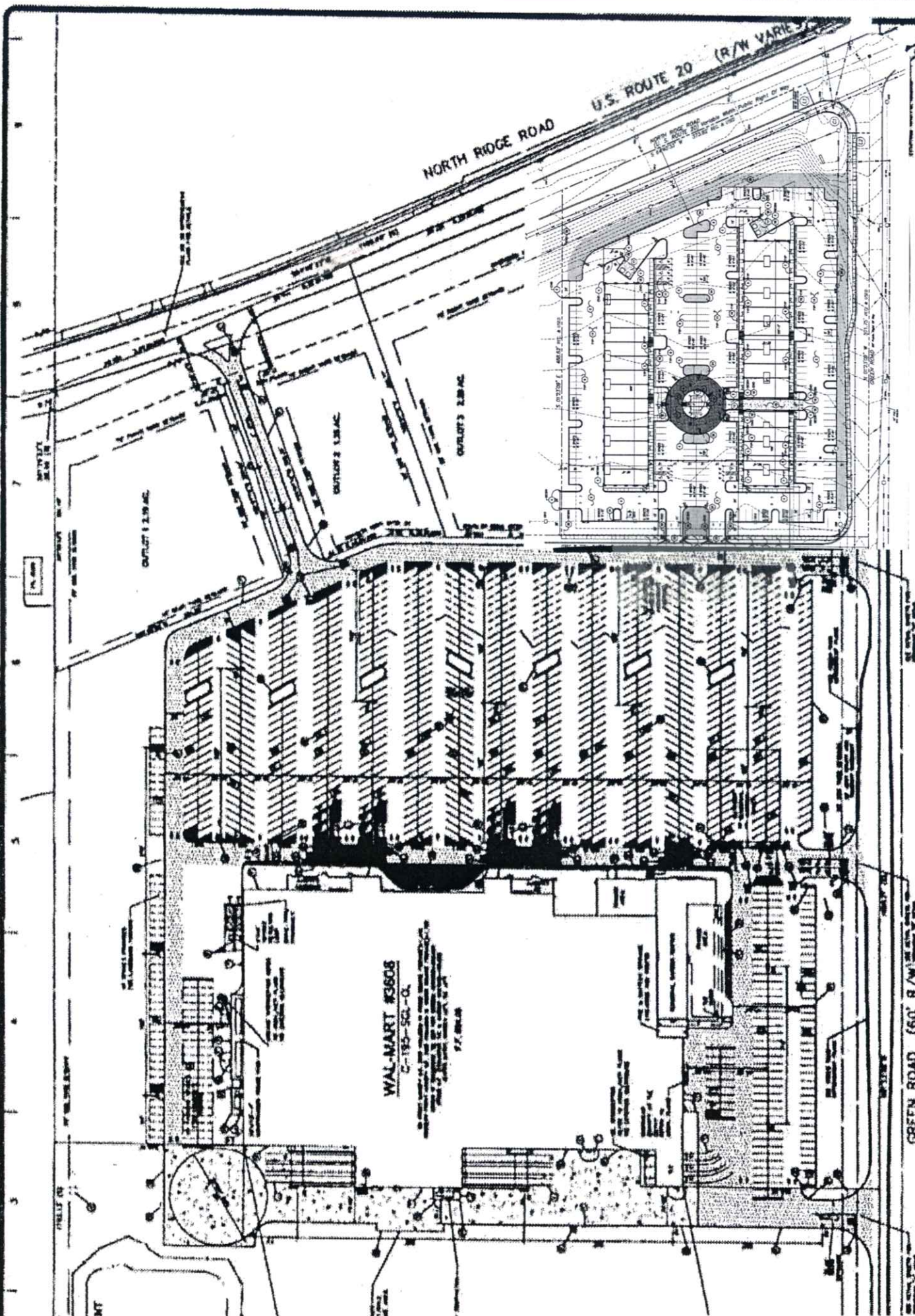


REVISIONS
NO. DATE BY

KS
KS ASSOCIATES, P.C.
280 Burns Road, Suite 100
Elyria, Ohio 44035
Phone (440) 383-4730

ART SUPERCENTER #3808-00, NORTH MADISON, OH
ON TOWNSHIP, LAKE COUNTY, OHIO
ART SUPERCENTER #3808-00, NORTH MADISON, OH



WAL-MART #3805
C-185-50-Q
P.F. 08/04

LEGEND FOR PROPOSED IMPROVEMENTS

- ① PROPOSED IMPROVEMENTS
- ② EXISTING IMPROVEMENTS
- ③ EXISTING UTILITIES
- ④ EXISTING DRIVEWAYS
- ⑤ EXISTING DRIVEWAYS TO BE REMOVED
- ⑥ EXISTING DRIVEWAYS TO BE RECONSTRUCTED
- ⑦ EXISTING DRIVEWAYS TO BE RECONSTRUCTED WITH CURBS
- ⑧ EXISTING DRIVEWAYS TO BE RECONSTRUCTED WITH CURBS AND SIDEWALKS
- ⑨ EXISTING DRIVEWAYS TO BE RECONSTRUCTED WITH CURBS AND SIDEWALKS AND BIKEWAYS
- ⑩ EXISTING DRIVEWAYS TO BE RECONSTRUCTED WITH CURBS AND SIDEWALKS AND BIKEWAYS AND LANDSCAPING
- ⑪ EXISTING DRIVEWAYS TO BE RECONSTRUCTED WITH CURBS AND SIDEWALKS AND BIKEWAYS AND LANDSCAPING AND LIGHTING
- ⑫ EXISTING DRIVEWAYS TO BE RECONSTRUCTED WITH CURBS AND SIDEWALKS AND BIKEWAYS AND LANDSCAPING AND LIGHTING AND SIGNAGE

SITE LEGEND

- ① 10' WIDE DRIVEWAY WITH 10' SIDEWALK AND BIKEWAY
- ② 10' WIDE DRIVEWAY WITH 10' SIDEWALK AND BIKEWAY AND LANDSCAPING
- ③ 10' WIDE DRIVEWAY WITH 10' SIDEWALK AND BIKEWAY AND LANDSCAPING AND LIGHTING
- ④ 10' WIDE DRIVEWAY WITH 10' SIDEWALK AND BIKEWAY AND LANDSCAPING AND LIGHTING AND SIGNAGE
- ⑤ 10' WIDE DRIVEWAY WITH 10' SIDEWALK AND BIKEWAY AND LANDSCAPING AND LIGHTING AND SIGNAGE AND BIKEWAY
- ⑥ 10' WIDE DRIVEWAY WITH 10' SIDEWALK AND BIKEWAY AND LANDSCAPING AND LIGHTING AND SIGNAGE AND BIKEWAY AND BIKEWAY
- ⑦ 10' WIDE DRIVEWAY WITH 10' SIDEWALK AND BIKEWAY AND LANDSCAPING AND LIGHTING AND SIGNAGE AND BIKEWAY AND BIKEWAY AND BIKEWAY
- ⑧ 10' WIDE DRIVEWAY WITH 10' SIDEWALK AND BIKEWAY AND LANDSCAPING AND LIGHTING AND SIGNAGE AND BIKEWAY AND BIKEWAY AND BIKEWAY AND BIKEWAY
- ⑨ 10' WIDE DRIVEWAY WITH 10' SIDEWALK AND BIKEWAY AND LANDSCAPING AND LIGHTING AND SIGNAGE AND BIKEWAY AND BIKEWAY AND BIKEWAY AND BIKEWAY AND BIKEWAY
- ⑩ 10' WIDE DRIVEWAY WITH 10' SIDEWALK AND BIKEWAY AND LANDSCAPING AND LIGHTING AND SIGNAGE AND BIKEWAY AND BIKEWAY AND BIKEWAY AND BIKEWAY AND BIKEWAY AND BIKEWAY

PARKING DATA

WAL-MART	28,000 S.F.
STANDARD SPACES	300 SPACES
ACCESSIBLE SPACES	30 SPACES
TOTAL PARKING	330 SPACES
BIKEWAYS	1,000 S.F.
BIKEWAY SPACES	20 SPACES

SITE DATA

WAL-MART	28,000 S.F.
OUTLET 1-4	11,300 S.F.
TOTAL	48,200 S.F.
LAND USE	COMMERCIAL
LOCAL JURISDICTION	LAKE COUNTY, OHIO
LOCAL ZONING	COMMERCIAL
LOCAL PLANNING	PLANNING COMMISSION
LOCAL HEALTH	HEALTH DEPARTMENT
LOCAL FIRE	FIRE DEPARTMENT
LOCAL POLICE	POLICE DEPARTMENT
LOCAL WATER	WATER DEPARTMENT
LOCAL SEWER	SEWER DEPARTMENT
LOCAL TRASH	TRASH DEPARTMENT
LOCAL STREET	STREET DEPARTMENT
LOCAL UTILITIES	UTILITIES DEPARTMENT